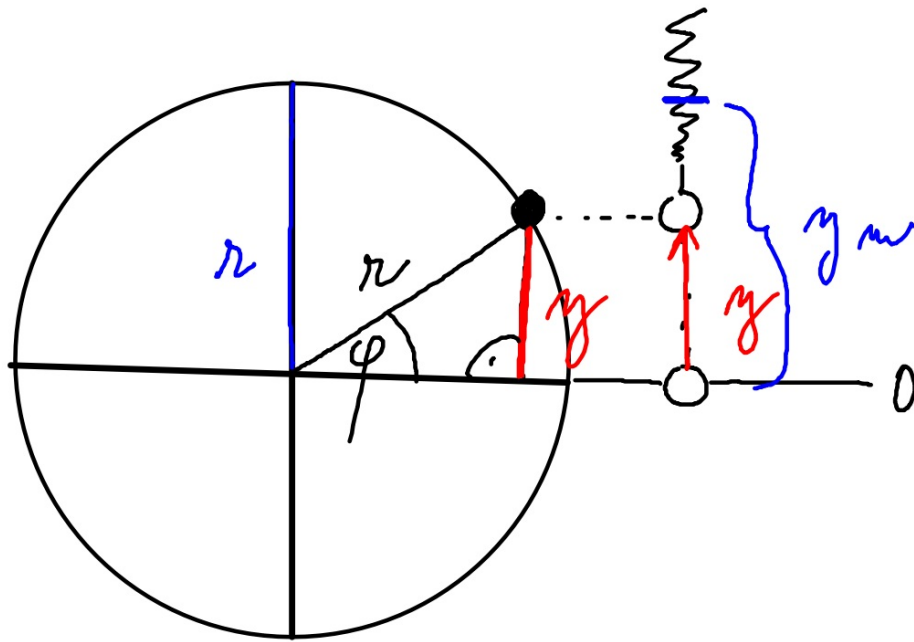


(1 142 0 527)



$$\omega = \frac{\varphi}{t}$$

$$\varphi = \omega t$$

$$\sin \varphi = \frac{y}{r}$$

$$y = r \sin \varphi = r \sin \omega t$$

$$y = y_m \sin \omega t$$

$$\omega = 2\pi f \quad f = \frac{1}{T}$$

$$\omega = \frac{2\pi}{T}$$

$$y = y_m \sin \frac{2\pi}{T} t$$